



category

diesel electricpump

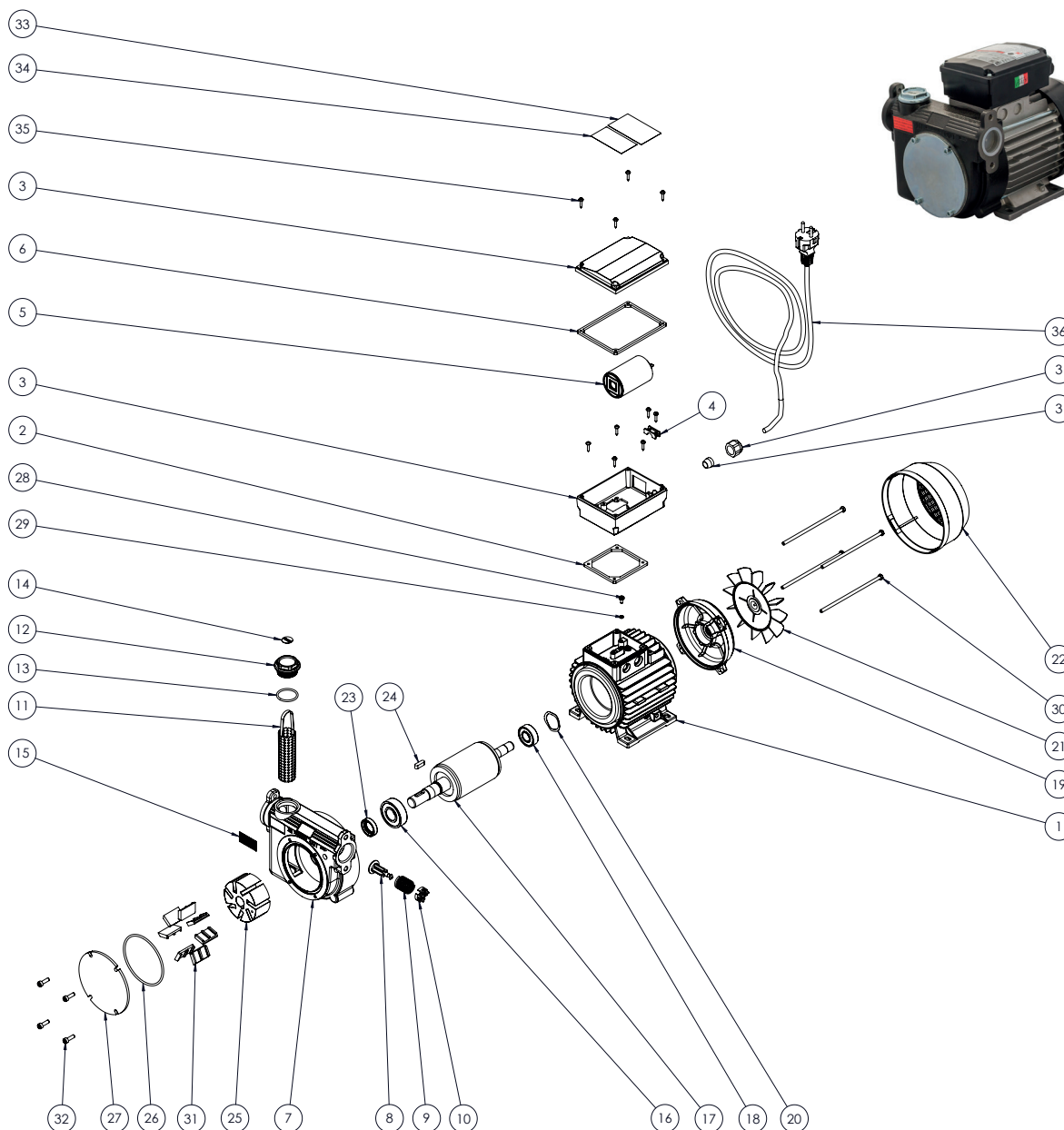
model

PA2 100

MADE IN ITALY



CODE	DESCRIPTION	QTY	
1	64100000000	Stator wrapped MEC 71 230V	1
2	10501000000	Seal FV 63 / 71 - 2	1
3	140250100000	Condensator box	1
4	140250300000	Cable stop	1
5	190061000000	Condensator 25 µF	1
6	10502000000	Seal FKL 71	1
7	71000079	Body pump 100 1" BSP/G - MEC 71	1
8	71000520	By pass valve	1
9	16001005	By pass spring 60-80-100	1
10	71000521	Plate	1
11	41410000	Inox filter	1
12	17001094	Cap 1"	1
13	18001008	O-Ring 3118 NBR	1
14	71000587	Label "FILTER" d18 cap 3/4"	1
15	71000546	Label "pulizia filtro"	1
16	101001880000	Radial ball bearing 6204 2RS	1
17	62901700000	Engine shaft MEC71	1
18	101001700000	Radial ball bearing 6202 2RS	1
19	15502600000X	Worked shield MEC 71	1
20	84505000000	Compensation ring Ø35	1
21	140260400000	Fan MEC 71 with ring Ø14	1
22	140260500000	Fan cover MEC 71	1
23	12001015020	Seal 20x30x7 SNBR	1
24	90505050000	Pin 6X6X20 UNI 6604-A	1
25	61000010	Rotor Ø72	1
26	18001022	O-Ring 85X3 NBR	1
27	71000063	Coperchio pompa 80-100 Lt.	1
28	82301410100	Cross Screw M4 x 8 ISO 7045	1
29	80301400000	Washer Grower Ø4	1
30	6100450000Z	Tie M5X135 ZnB	4
31	71000569	Vane	7
32	13001007	ScrewTCCE M5x16 ISO 4762	4
33	71000653	Label "DANGER"	1
34	-	Label "CE"	1
35	VT004	Cross Screw Ø3,5x16 Autof.UNI 6954	10
36	190200000000	Black cable with schuko pulg 230V	1



Adam Pumps spa
via della Resistenza 46/48
41011 Campogalliano (MO) - ITALIA

tel. +39 059 528 128
fax +39 059 528 437
info@adampumps.com